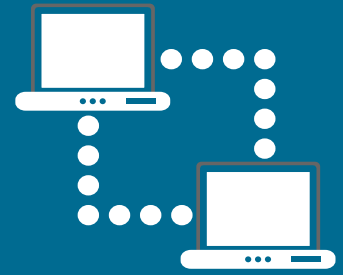


# Ethernet In The First Mile WAN



## CRITICAL INFORMATION SUMMARY

### Information about the service.

Here's a quick summary of all the important bits about your **Ethernet In The First Mile WAN** plan.

It covers things like the length of your contract and how much you need to pay each month.

Ethernet in the First Mile or "EFM" is a symmetrical access technology (as opposed to ADSL which is asymmetrical), specifically designed for businesses that require a simple, value for money style of access technology.

### MINIMUM TERM

The minimum term is **24 months**.

### What's Included and Excluded?

Your Ethernet in the First Mile WAN service includes:

- **Static IP Address**

You receive an **Unlimited Data** Allowance each month. There are no peak or off peak restrictions on your use and no excess usage charges.

This product does not come with internet access however all traffic between AAPT eLine WAN sites is unlimited. A separate connection is required for internet access

### Information about pricing.

The monthly charge depends on the zone your service is located in, which is determined by Telstra. It also depends on the access speed you choose:

Bandwidth	Charges
1Mb/1Mb (2 Wire)	\$259
10Mb/10Mb (4 Wire)	\$359
10Mb/10Mb (6 Wire)	\$599
10Mb/10Mb (8 Wire)	\$699
10Mb/10Mb (8 Wire)	\$799

The total minimum amount that you will pay for the length of your 24 month contract and depends on the plan that you choose:

Access Speed	Total (24 Months)
1Mb/1Mb (2 Wire)	\$6,216
10Mb/10Mb (4 Wire)	\$8,616
10Mb/10Mb (6 Wire)	\$14,376
10Mb/10Mb (8 Wire)	\$16,776
10Mb/10Mb (8 Wire)	\$19,176

### INSTALLATION CHARGES

There is an installation charge of **\$699** for all speeds. This is a one off charge.

### EARLY TERMINATION

If you choose to cancel your service or it is disconnected for any reason within the contract term you will be charged an early termination fee (ETF) comprised of your minimum monthly commitment, multiplied by the months remaining in your contract. You must provide 30 days' notice to us to disconnect a service.

If one of our suppliers raises its prices in the future, this may result in the cost of your service increasing. We will let you know before this happens.

### Other Information

### AVAILABILITY

Ethernet In the First Mile Internet is available for businesses located in metropolitan areas of Brisbane, Melbourne, Sydney, Adelaide, Canberra and Perth, as well as many regional centres.

Availability depends on a number of factors including whether the necessary equipment is available at the relevant exchange, the length of the cable to the nearest telephone exchange and the quality of the existing copper pairs that the service runs over.

You need available copper lines in order to get SHDSL, but the line must not be active and in use as a PSTN telephone service. In some cases you may not have enough copper lines at your location for the service to work

### ETHERNET SPEEDS

- Actual speeds you will receive will vary due to a number of factors such as your distance from an exchange, the network connecting the exchange, your equipment and software and internet traffic.
- Download speeds on devices connected via a Wi-Fi modem or network extender may be slower than on devices connected by Ethernet cable.

### EQUIPMENT

You may use your own router provided it is compatible with our service, however this means that you will be responsible for the configuration and management of the router. Ask us for information on approved routers. Alternatively you may purchase your router from us. If you do purchase a router from us we will support, monitor and manage the router on your behalf. We recommend Cisco 881 routers which are **\$660**.

Got any Questions?

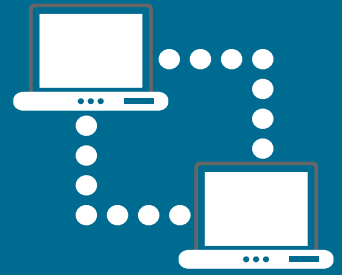
 **1300 309 984**

 **info@hmtel.com.au**

 **www.hmtel.com.au**



# Ethernet In The First Mile WAN



## CRITICAL INFORMATION SUMMARY

### BILLING

We will bill you in advance for the minimum monthly charge and features. Your first bill will include charges for part of the month from when you took up your plan until the end of that billing cycle, as well as the minimum monthly charge in advance for the next billing cycle.

### WE'RE HERE TO HELP

If you have any questions, just call us on [1300 309 984](tel:1300309984) so we can serve you better. Or you can visit us at [www.hmtel.com.au](http://www.hmtel.com.au) for additional information, including to access information about your usage of the service.

### COMPLAINTS

If you have any concerns or complaints, you can access our complaint resolution process via the details on our website at [www.hmtel.com.au](http://www.hmtel.com.au). You can also contact the Telecommunications Industry Ombudsman at [http://www.tio.com.au/](http://www.tio.com.au)

Got any Questions?

---

 **1300 309 984**

 **info@hmtel.com.au**

 **www.hmtel.com.au**

